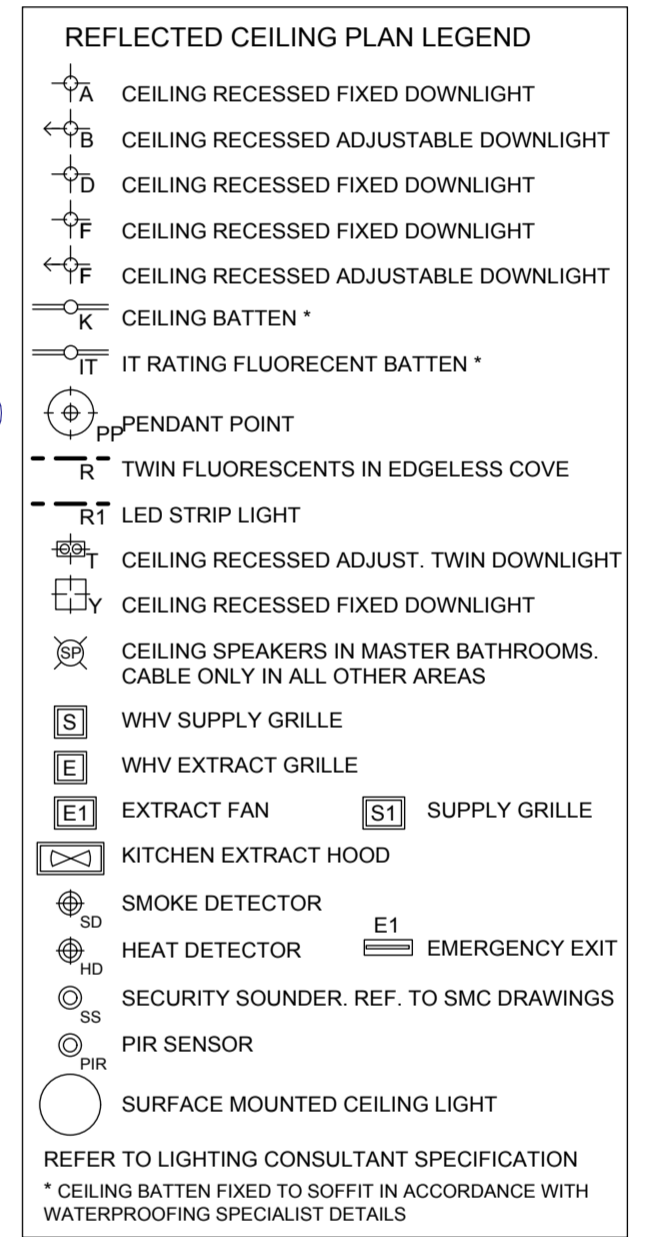
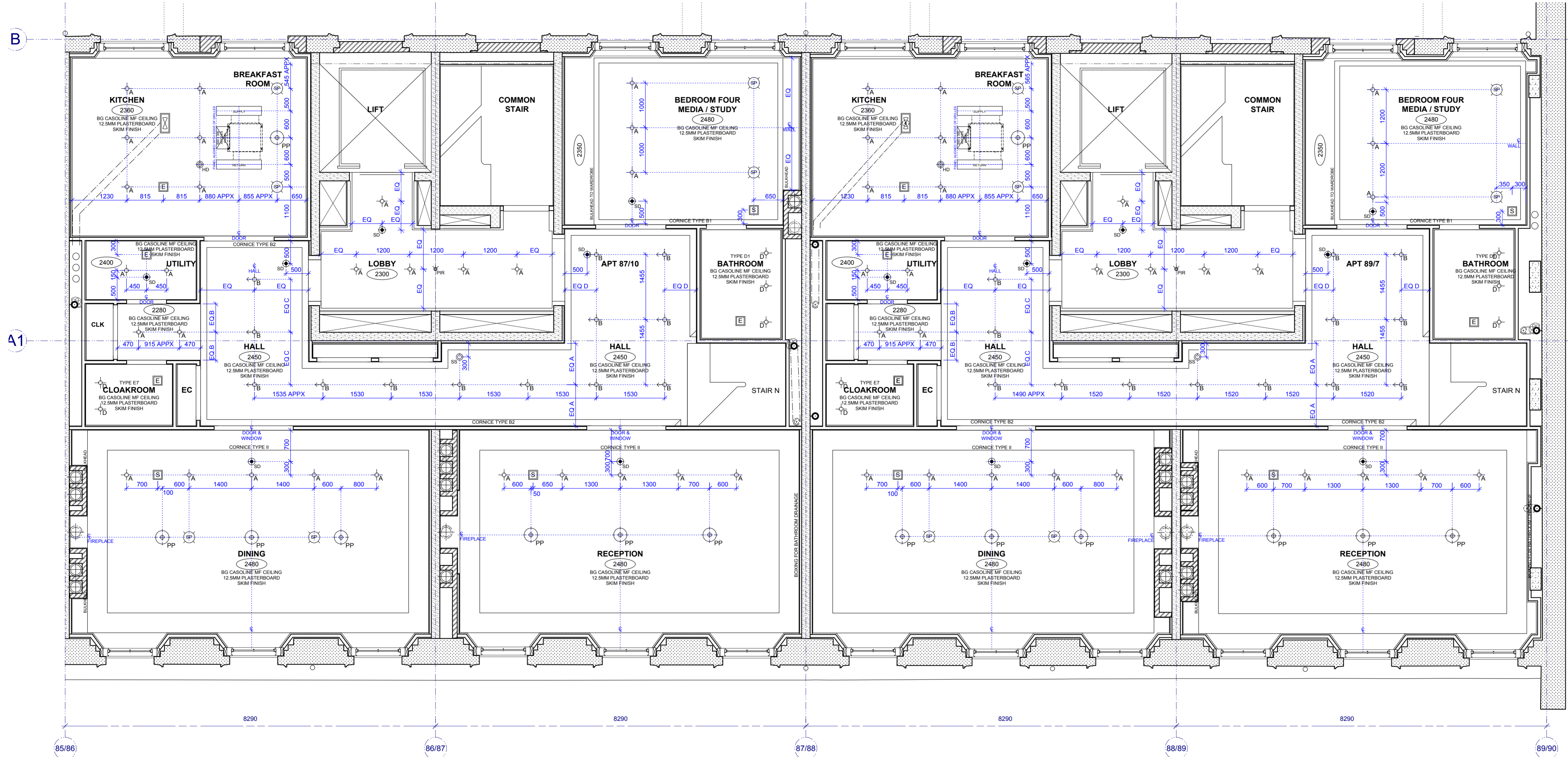


Notes: RCP Drawings

1. TO BE READ IN CONJUNCTION WITH SPECIFICATIONS & CONSULTANTS DOCUMENTATION
2. REFER TO GENERAL ARRANGEMENT DRAWINGS.
- 2119/86-89/6108
- 2119 1435-1449 DRY LINING SERIES.
- 2119 1850-1859 CORNICE DETAILS AND REFERENCES
3. REFER TO MECSEERVE DRAWINGS AND M&E CONTRACTORS CO-ORDINATED DRAWINGS FOR DETAILS OF MECHANICAL, ELECTRICAL, CONTROL AND DATA SERVICES.
4. ALL PROPRIETARY MATERIALS & COMPONENTS SHALL BE MANUFACTURED TO RELEVANT BRITISH STANDARDS AND USED OR INSTALLED IN ACCORDANCE WITH MANUFACTURER'S RECOMMENDATIONS AND RELEVANT CODES OF PRACTICE SO AS TO SATISFY SCHEDULE 1 OF THE BUILDING REGULATIONS WITH REGARD TO SUITABILITY, FIXING, ETC.
5. PROVIDE FIXINGS TO STRUCTURAL SOFFIT ABOVE SUSPENDED CEILING FOR PENDANT LIGHT FIXINGS. REFER TO SERVICES ENGINEERS DRAWINGS FOR SPECIFICATION.
6. ROUTES FOR SERVICE DUCTS ETC WHERE SHOWN ARE DIAGRAMATIC AND ARE TO BE DETERMINED ON THE M&E CONTRACTORS COORDINATED SERVICES DRAWINGS.
7. WHERE CEILING HEIGHTS ARE SHOWN FROM FINISHED CEILING LEVEL (FCL) ABOVE FINISHED FLOOR LEVEL (FFL) HEIGHTS ARE TO BE EXACT TO SHOWN DIMENSIONS. IN ALL OTHER CASES DIMENSIONS SHOWN ARE MAXIMUM ANTICIPATED DROP FROM STRUCTURAL SOFFIT TO CEILING FINISH. WHERE EVER POSSIBLE CEILING IN THESE CASES ARE TO BE INSTALLED HIGHER THAN THESE DIMENSIONS.
8. ALL EXPOSED SOFFITS AND PLATES TO UNDERSIDE OF STEELS TO BE FIREPROOFED AS DETAILED 2119 1435-1449 DRY LINING SERIES.
9. ALL PENETRATIONS THROUGH FLOOR SLABS AND WALLS WITHIN THE CEILING VOID TO BE FIRE STOPPED AS DETAILED PRIOR TO FIXING SUSPENDED CEILINGS.
10. WHERE NO CORNICES SHOWN (KITCHENS & BATHROOMS) CEILING PERIMETER TO BE FINISHED WITH STOP BEAD TIGHT TO WALL PLASTER TO GIVE CONSISTENT CUSHION EDGE JOINT.
11. SMOKE DETECTOR SYMBOL INDICATIVE OF FIRE ALARM FITTING LOCATION ONLY. INDIVIDUAL FIRE ALARM FITTINGS TO BE COORDINATED WITH SERVICE ENGINEERS DRAWINGS.
12. CEILING HEATING: ALL CEILINGS SCHEDULED FOR ELECTRIC HEATING MATS TO BE LAID ON A 400MM GRID AND HAVE QUILT INSULATION ABOVE HEATING MAT.
13. SOFFITS TO EXISTING STAIRCASES PLASTER FINISH
14. SOFFITS TO NEW STAIRCASES AS DETAILED
15. DOWNSTANDS AND BULKHEADS AS INDICATED
17. CEILING ACCESS PANELS AS NOTED
18. FOR SETTING OUT OF FITTINGS IN DRAWINGS. REFER TO TRADE CONTRACTOR BATHROOMS.



C	2011-09-30	MF	AS BUILT
B	2010-09-24	GR	ISSUED FOR CONSTRUCTION. GENERAL UPDATE. SETTING OUT DIMENSIONING ADDED. BULKHEAD HEIGHTS ADDED. CORE LIGHTING UPDATED.
A	2009-10-09	OR	CORNICE ADDED ADJACENT WALL & BEDROOM 4
-	2009-07-31	AZ	ISSUED FOR TENDER
REV	DATE	ORIG	AMENDMENTS

Do not scale. Report all changes and omissions to architects. Dimensions to be checked on site before fabrication.



Nilsson Architects Limited 48 Old Church Street London SW3 5BQ
Telephone: 020 7349 8030 www.nilssonarchitects.co.uk

THE LANCASTERS

Drawing Title
BLOCK 86 - 89
FOURTH FLOOR - REFLECTED CEILING PLAN

Scale Date
1:50@A1 JULY 2009

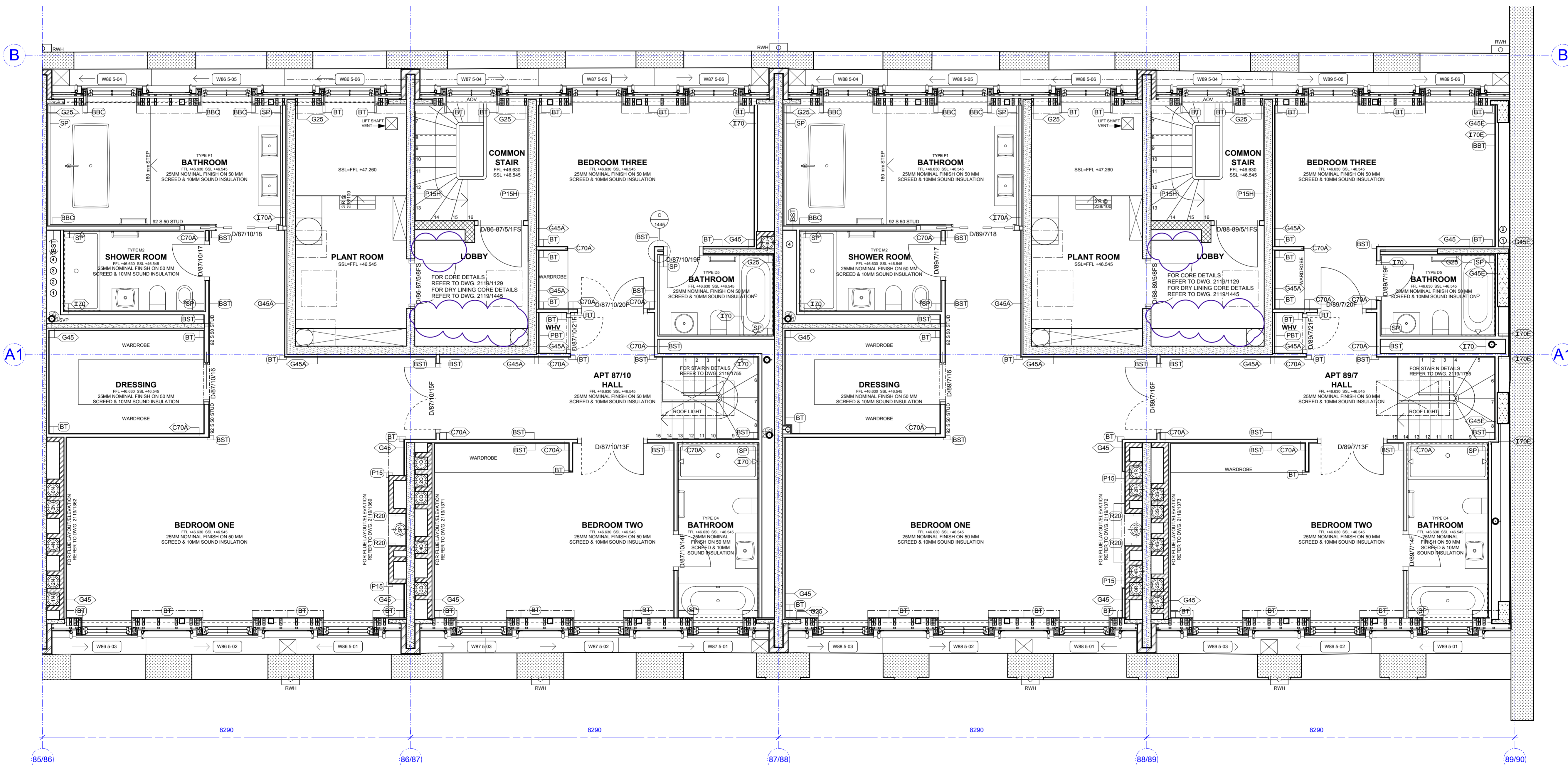
Status
AS BUILT

Drawing No. Revision
2119/86-89/6148 C

Notes: GA Drawings

1. TO BE READ IN CONJUNCTION WITH SPECIFICATIONS & CONSULTANTS DOCUMENTATION
2. FOR SETTING OUT DIMENSIONS REFER TO DWG NO. 211986-89/027
3. DOOR NOS. - APARTMENT DOORS: D / HOUSE NO. / APARTMENT NO. / DOOR NO. AND FIRE RATING (WHERE REQUIRED). E.G. "D/77/2/1F". - COMMON AREA DOORS: D/FLOOR/DOOR NO. AND FIRE RATING (WHERE REQUIRED) E.G. "D/1/2/1F". ALL DOORS LABELLED "F" TO BE 30 MINUTES FIRE RESISTING UNLESS LONGER PERIOD NOTED AND TO INCLUDE SMOKE SEALS WHERE LABELLED "FS". SEE SCHEDULE FOR SELF CLOSING REQUIREMENTS
4. WINDOW/EXTERNAL DOOR NOS. - W HOUSE NO. LEVEL-NO. E.G. "W77 2-01"
5. WALL TYPE (NON-LOAD BEARING) & FINISHES SYMBOLS E.G. "C70A" "BBC" - SEE DWG. NO. 2119/1435
6. FIRE RATING - ELEMENTS OF STRUCTURE (WALLS, COLUMNS, FLOORS & BEAMS GIVING LATERAL STABILITY) MINIMUM 90 MINS; OTHER COMPARTMENT WALLS & FLOORS BETWEEN APARTMENTS & BETWEEN APARTMENTS & COMMON AREAS MINIMUM 60 MINS; OTHER FLOORS & WALLS BETWEEN APARTMENT INTERNAL HALLS (CORRIDORS & CONNECTING ROOMS (EXCEPT CLOAKROOMS / BATHROOMS) MINIMUM 30 MINS
7. FOR CHIMNEY AND FIREPLACE DETAILS BETWEEN GRID A-B REFER TO DWG NOS. 2119/1475-1479-3.
8. FOR STEEL BOX FRAME DETAILS REFER TO DWG NOS. 2119/1420-1428 AND 1480
9. FOR FLOOR AND CEILING DETAILS REFER TO DWG NOS. 2119/1460-1462 AND 1464
10. FOR FLOOR FINISHES AND THRESHOLD DETAILS REFER TO FLOOR FINISH AND THRESHOLD DETAILS SCHEDULE

--- DENOTES EXISTING STRUCTURE DEMOLISHED



REV	DATE	ORIG	AMENDMENTS
H	2011-09-29	GR	AS BUILT. CHANGES CLOUDED. CORE DOOR NUMBERS REMOVED.
G	2010-10-08	GR	ISSUED FOR CONSTRUCTION. CHANGES CLOUDED. LEADING LEAFS OF DOUBLE DOORS FRAMED. DOOR NUMBERS ADDED IN CORE AREAS. BATHROOM SLIDING DOORS UPDATED. NOTE 9 AMENDED. NOTE 10 ADDED. GENERAL UPDATE.
F	2010-03-10	OR	ISSUED FOR CONSTRUCTION. CHANGES CLOUDED. DOORS UPDATED AND GENERAL UPDATE.
E	2009-12-18	OR	ISSUED FOR CONSTRUCTION. CHANGES CLOUDED. GENERAL UPDATE.
D	2009-10-14	OR	ISSUED FOR CONSTRUCTION. CHANGES CLOUDED. DOORS UPDATED AND GENERAL UPDATE.
C	2009-07-31	OR	ISSUED FOR CONSTRUCTION. CHANGES CLOUDED. DOORS UPDATED AND GENERAL UPDATE.
B	2008-11-03	OR	BATHROOM AREAS UPDATED. DOOR NUMBERS AND LEVELS ADDED. FLUES UPDATED BETWEEN GRIDS A-B.
A	2008-10-06	OR	GENERAL LAYOUT UPDATED. FLUES ADDED. WALL AND WINDOWS TO GRIDLINE 10 UPDATED.
-	2008-08-01	OR	ISSUED FOR STRUCTURAL FRAME INFORMATION.

Do not scale. Report all changes and omissions to architects. Dimensions to be checked on site before fabrication.



Nilsson Architects Limited 48 Old Church Street London SW3 5BY
Telephone: 020 7349 6030 www.nilssonarchitects.co.uk

THE LANCASTERS

Block 86 - 89
FIFTH FLOOR - GA
Scale: 1:50@A1
Date: August 2008

Status: **AS BUILT**

Drawing No: 2119/86-89/6109
Revision: H